

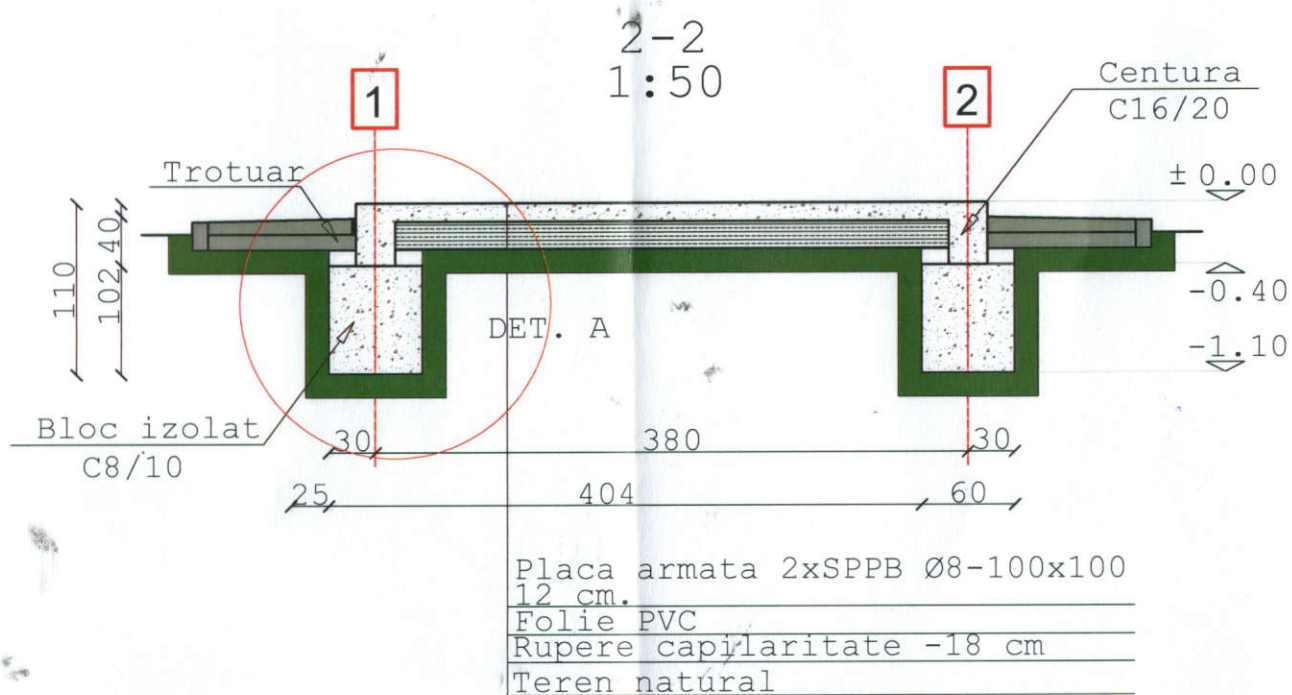
Technical drawing of a rectangular frame structure, likely a foundation or wall section, showing dimensions and labels.

Dimensions:

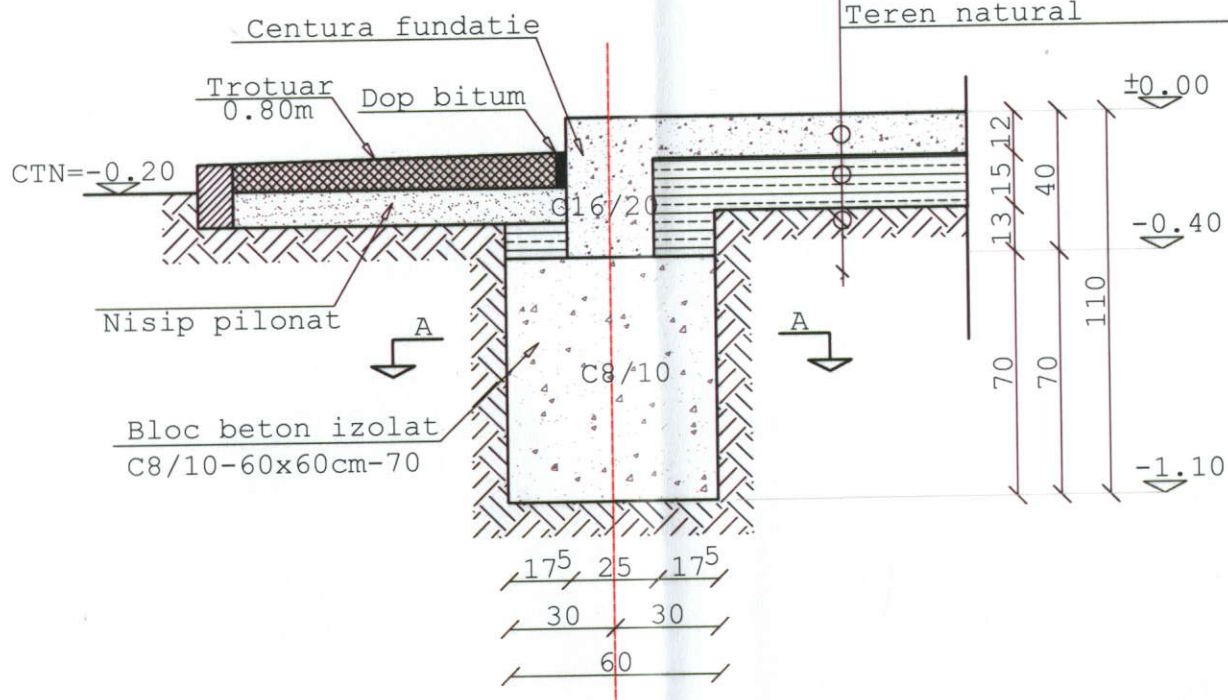
- Overall width: 440
- Overall height: 340
- Internal width (between vertical centerlines): 320
- Internal height (between horizontal centerlines): 220
- Vertical centerline offset from left edge: 85
- Vertical centerline offset from right edge: 85
- Horizontal centerline offset from top edge: 175
- Horizontal centerline offset from bottom edge: 175
- Horizontal distance between vertical centerlines: 190
- Horizontal distance between horizontal centerlines: 190
- Horizontal distance between vertical centerlines (inner): 355
- Horizontal distance between horizontal centerlines (inner): 405
- Horizontal distance between vertical centerlines (outer): 255
- Horizontal distance between horizontal centerlines (outer): 305
- Horizontal distance between vertical centerlines (inner, top/bottom): 25
- Horizontal distance between horizontal centerlines (inner, top/bottom): 25
- Horizontal distance between vertical centerlines (outer, top/bottom): 30
- Horizontal distance between horizontal centerlines (outer, top/bottom): 30

Labels and Notes:

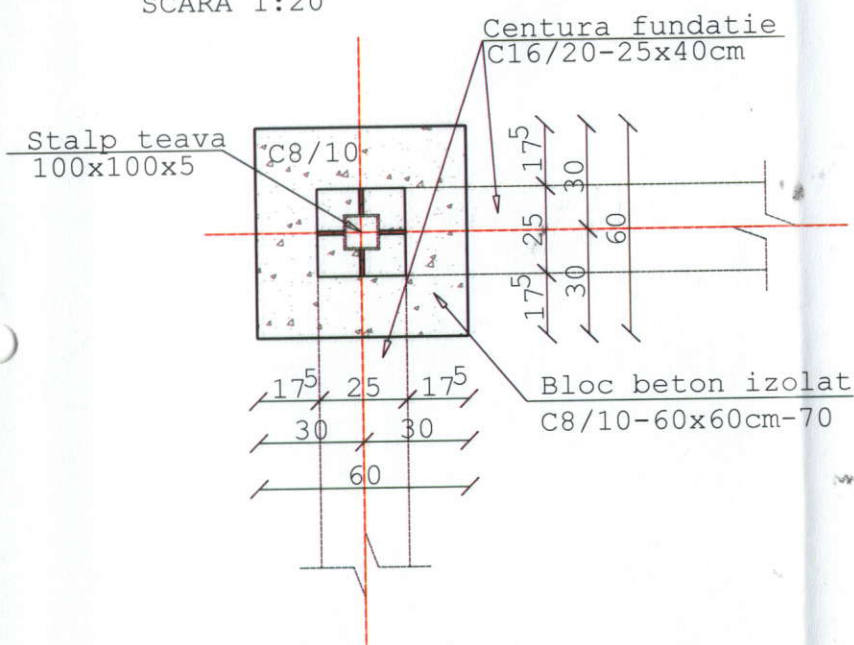
- CTN=-0.20** (appears four times at the corners)
- F1** (appears four times at the corners)
- 60x60** (appears four times at the corners)
- 1.10** (appears four times at the corners)
- C25x40** (appears four times, indicating the material and size of the vertical and horizontal reinforcement bars)
- 1** and **2** (appears twice each, indicating the material and size of the horizontal and vertical reinforcement bars)
- A** and **B** (appears twice each, indicating the material and size of the horizontal and vertical reinforcement bars)



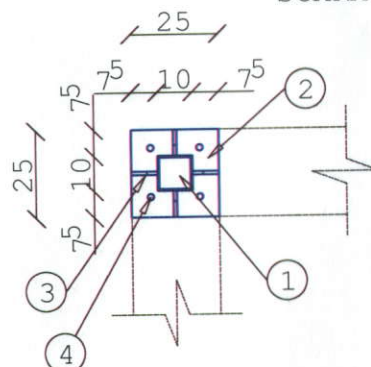
DETALIUL 1
SCARA 1:20



SECTIUNE A-A
SCARA 1:20



DET. CARCASA
SCARA 1:20

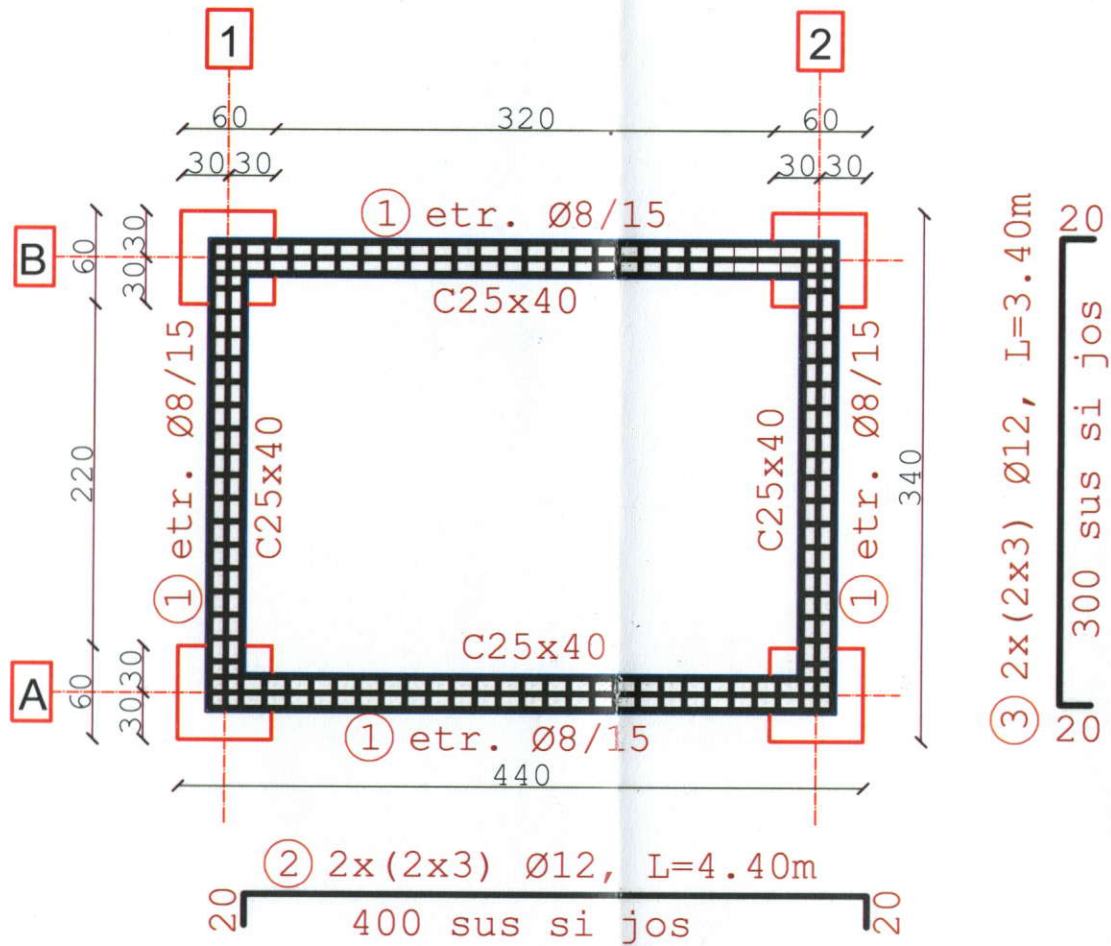


1. Tv100x5
2. Tg250x250x20
3. Tg75x80x10
4. 2x2M20 Gr.6.8

MATERIALE

Material	Element	Caracteristici
Beton	Strat beton simplu	C8/10, X0
	Cuzineti / Gr. de echilibrare	C16/20, XC2, Dmax=16 mm, CEM II A-S 42.5N, P8/10
	Placa pardoseala	C16/20, XC1, Dmax=16 mm, CEM II A-S 42.5N, P8/10
Armaturi	Toate elementele din b.a.	BSt500S clasa C;
Metal	Confectii metalice	S355J2G3

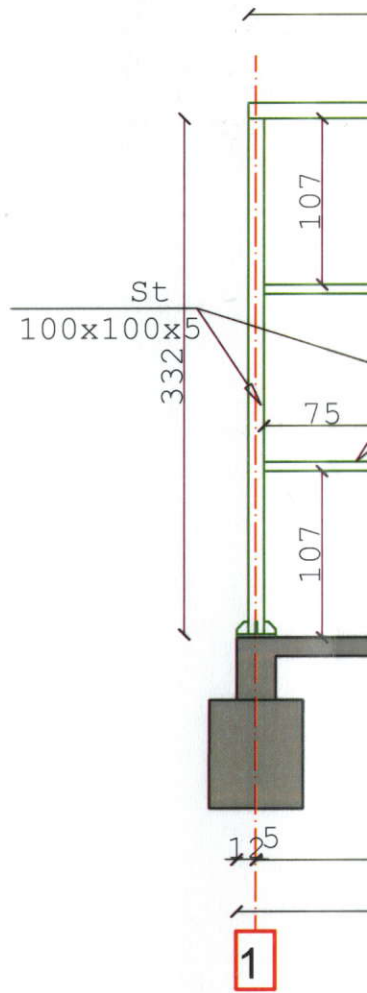
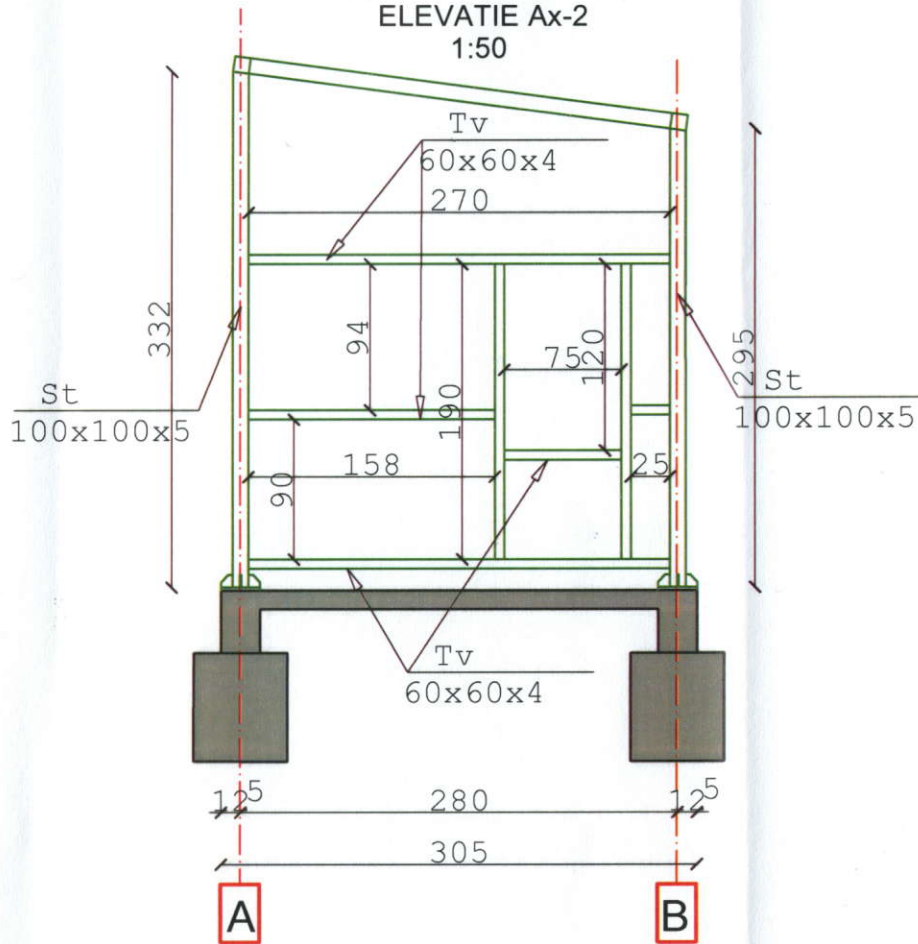
PLAN ARMARE FUNDATII 1:50



MATERIALE

Material	Element	Caracteristici
Beton	Strat beton simplu	C8/10, X0
	Cuzineti / Gr. de echilibrare	C16/20, XC2, Dmax=16 mm, CEM II A-S 42.5N, P8/10
	Placa pardoseala	C16/20, XC1, Dmax=16 mm, CEM II A-S 42.5N, P8/10
Armaturi	Toate elementele din b.a.	BSt500S clasa C;
Metal	Confectii metalice	S355J2G3

CONFECTII METALICE
ELEVATIE Ax-2
1:50



CONFECTII METALICE
ELEVATIE Ax-1
1:50

