

SPITALUL DE PNEUMOTIZIOLOGIE LEORDENI

com.:Leordeni, sat.Carclumaresti nr.106

Jud.:Arges

e-mail:contact@spitalleordeni.ro

www.spitalleordeni.ro

Tel.:0248.653.694, fax:0248.653.690



Biroul RUNOS-Informatica

Nr. : 432

Data :28.11.2023

SPITALUL DE PNEUMOTIZIOLOGIE LEORDENI ARGES	
INTRARE NR.	29432
IESIRE	
la luna 11	ziua 28

ROMANIA
JUDETUL ARGES
CONSILIUL JUDETEAN ARGES

29. NOV. 2023

Nr. 29438

Către: Consiliul Județean Argeș

Prin prezenta, va transmitem spre aprobare organigrama si statul de functii, cu urmatoarele modificari:

A. Organigrama

- Reorganizare „Birou de management al calitatii serviciilor de sanatate” in „Compartiment de management al calitatii serviciilor de sanatate”;
- Reorganizare „Birou RUNOS-Informatica” in „Compartiment RUNOS-Informatica”;

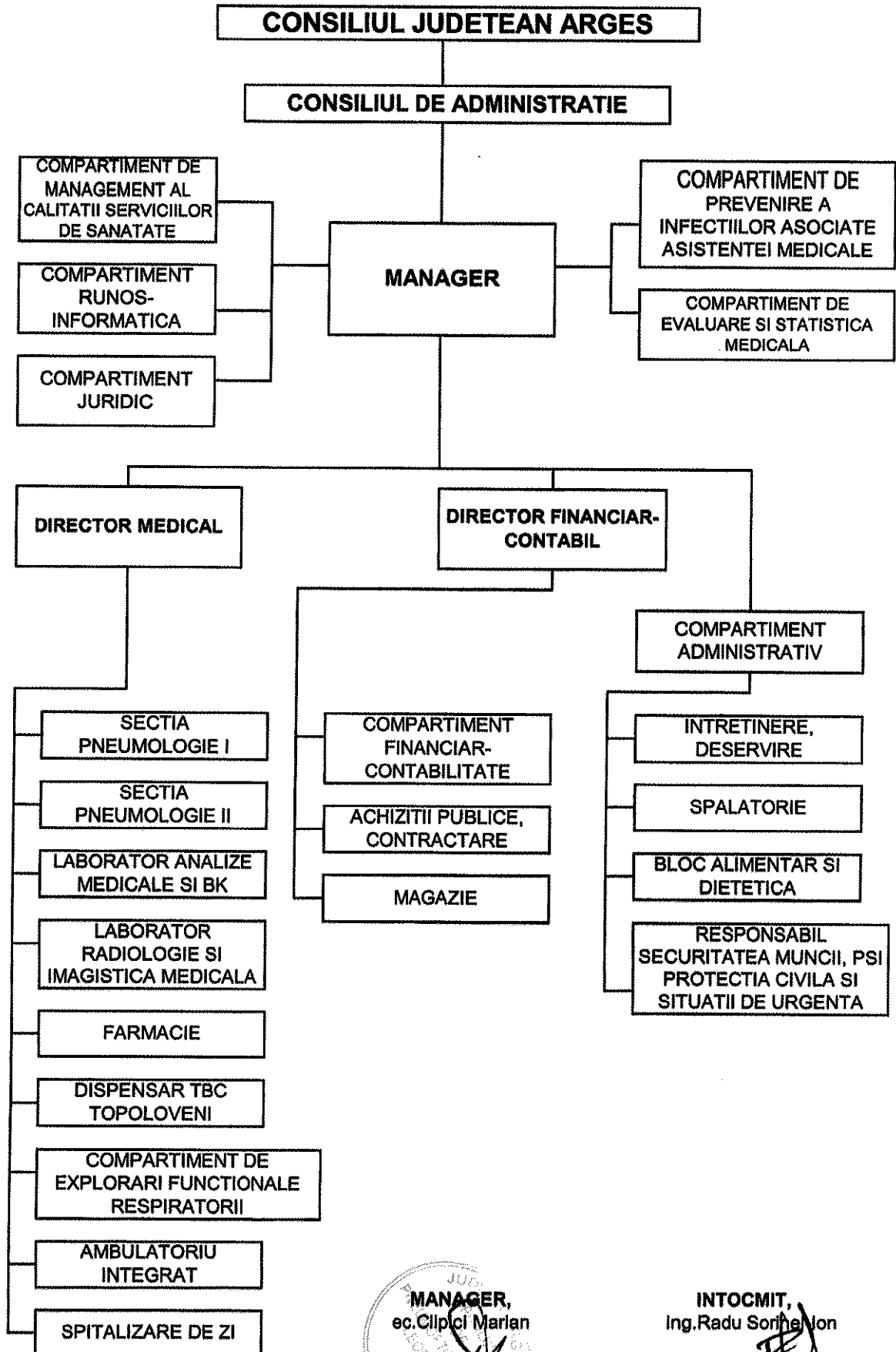
B. Stat de Functii

- Reorganizare „Birou de management al calitatii serviciilor de sanatate” in „Compartiment de management al calitatii serviciilor de sanatate”;
- Transformare functia de conducere, de „Sef birou de management al calitatii serviciilor de sanatate” in functie de executie, de „Referent de specialitate, gradul I”, specialitatea Inginer, pozitia 4, in statul de functii aprobat prin H.C.J. nr. 297/26.10.2023;
- Postul de Medic sef laborator, devine ocupat, pozitia 53, in cadrul Laboratorului de analize medicale si Bk, in statul de functii aprobat prin H.C.J. nr. 297/26.10.2023, ca urmare a validarii rezultatului de concurs, prin sedinta CJ din data de 28.11.2023.
- Postul de Biolog, inceteaza delegarea de sef de laborator, pozitia 56, in cadrul Laboratorului de analize medicale si Bk, in statul de functii aprobat prin H.C.J. nr. 297/26.10.2023, ca urmare a validarii rezultatului de concurs.
- Reorganizare „Birou RUNOS-Informatica” in „Compartiment RUNOS-Informatica”;
- Transformare functia de conducere, de „Sef birou RUNOS-Informatica” in functie de executie, de „Analist, gradul IA”, specialitatea Informatica, pozitia 67, in statul de functii aprobat prin H.C.J. nr. 297/26.10.2023;
- Postul vacant de Economist specialist IA se desfiinteaza, pozitia 73, in statul de functii aprobat prin H.C.J. nr. 297/26.10.2023;

MANAGER
ec.Clipci Mărlău

INTOCMIT
Ing.Radu Sorinel Ion

ORGANIGRAMA



MANAGER,
ec. Clipsei Marian

INTOCMIT,
Ing. Radu Sorinel Ion

STAT DE FUNCTII

Nr. Crt Ve chi	Nr. Crt	Denumirea functiei conf.L153/2017	Specialitatea	Nivel studiil	Cuatum post	Obs.
	0	1	2	3	4	5
CONDUCERE						
1	1	Manager - grad II	Economist	S	1	
2	2	Director Financiar-Contabil - grad II	Economist	S	1	
3	3	Director Medical	Pneumologie	S	1	
COMPARTIMENT DE MANAGEMENT AL CALITATII SERVICIILOR DE SANATATE						
4	4	Referent de specialitate, gradul I	Inginer	S	1	
5	5	Referent de specialitate, gradul II	Jurist	S	1	
6	6	Medic	Medicina generala	S	1	VACANT
COMPARTIMENT DE PREVENIRE A INFECTIILOR ASOCIATE ASISTENTEI MEDICALE						
-Personal Sanitar Superior						
7	7	Medic specialist	Epidemiologie	S	1	VACANT
8	8	Medic specialist	Boli infectioase	S	1	VACANT
-Personal Sanitar Mediu						
9	9	Asistent Medical Principal	Igiena	PL	1	
-Personal Sanitar Aux.						
10	10	Agent DDD		G	1	
COMPARTIMENT DE EVALUARE SI STATISTICA MEDICALA						
-Personal Sanitar Mediu						
11	11	Statistician Medical		M	1	TEMPORAR VACANT
12	12	Registrator Medical		M	1	
SECTIA PNEUMOLOGIE I						
-Personal Sanitar Superior						
13	13	Medic Sef sectie	Pneumologie	S	1	VACANT
14	14	Medic Primar	Pneumologie	S	1	Delegatie Medic Sef
15	15	Medic Primar	Pneumologie	S	1	OCUPAT TEMPORAR
16	16	Medic Primar	Pneumologie	S	1	
-Personal Sanitar Mediu						
17	17	Asistent Medical Sef	Generalist	PL	1	
18	18	Asistent Medical Principal	Generalist	PL	1	
19	19	Asistent Medical Principal	Generalist	PL	1	
20	20	Asistent Medical Principal	Generalist	PL	1	
21	21	Asistent Medical Principal	Generalist	S	1	
22	22	Asistent Medical Principal	Generalist	S	1	
23	23	Asistent Medical Principal	Generalist	PL	1	
24	24	Asistent Medical Principal	Generalist	PL	1	
25	25	Asistent Medical Principal	Generalist	S	1	
-Personal Sanitar Aux.						
26	26	Infirmiera		G	1	
27	27	Infirmiera		G	1	
28	28	Infirmiera		G	1	
29	29	Infirmiera		G	1	
30	30	Ingrijitoare		G	1	

	0	1	2	3	4	5
31	31	Ingrjiitoare		G	1	
32	32	Ingrjiitoare		G	1	
SECTIA PNEUMOLOGIE II						
-Personal Sanitar Superior						
33	33	Medic Sef sectie	Pneumologie	S	1	VACANT
34	34	Medic Specialist	Pneumologie	S	1	
35	35	Medic Primar	Pneumologie	S	1	VACANT-REZERVAT
36	36	Medic Primar	Pneumologie	S	1	Delegatie Medic Sef
-Personal Sanitar Mediu						
37	37	Asistent Medical Sef	Generalist	PL	1	
38	38	Asistent Medical Principal	Generalist	PL	1	
39	39	Asistent Medical Principal	Generalist	PL	1	
40	40	Asistent Medical	Generalist	PL	1	
41	41	Asistent Medical Principal	Generalist	PL	1	
42	42	Asistent Medical Principal	Generalist	S	1	
43	43	Asistent Medical Principal	Generalist	S	1	
44	44	Asistent Medical	Generalist	S	1	
45	45	Asistent Medical	Generalist	S	1	
-Personal Sanitar Aux.						
46	46	Infirmiera		G	1	
47	47	Infirmiera		G	1	
48	48	Infirmiera		G	1	
49	49	Infirmiera		G	1	
50	50	Ingrjiitoare		G	1	
51	51	Ingrjiitoare		G	1	
52	52	Ingrjiitoare		G	1	
LABORATOR ANALIZE MEDICALE SI BK						
-Personal Sanitar Superior						
53	53	Medic Sef Laborator	Laborator	S	1	
54	54	Medic specialist	Laborator	S	1	TEMPORAR VACANT
55	55	Medic specialist	Laborator	S	1	VACANT
-Alt Personal Sanitar Superior						
56	56	Biolog Principal	Biolog	S	1	
-Personal Sanitar Mediu						
57	57	Asistent Medical Principal	Laborator	PL	1	
58	58	Asistent Medical Principal	Laborator	PL	1	
59	59	Asistent Medical Principal	Laborator	PL	1	VACANT
60	60	Asistent Medical Principal	Laborator	PL	1	
-Personal Sanitar Aux.						
61	61	Ingrjiitoare		G	1	
LABORATOR RADIOLOGIE SI IMAGISTICA MEDICALA						
-Personal Sanitar Mediu						
62	62	Asistent Medical Principal	Radiologie	PL	1	
63	63	Asistent Medical Principal	Radiologie	PL	1	
FARMACIE						
-Alt Personal Sanitar Superior						
64	64	Farmacist sef	Farmacie	S	1	
-Personal Sanitar Mediu						
65	65	Asistent Medical Principal	Farmacie	PL	1	
COMPARTIMENT DE EXPLORARI FUNCTIONALE RESPIRATORII						
-Personal Sanitar Mediu						
66	66	Asistent Medical Principal	Generalist	S	1	

0	1	2	3	4	5
COMPARTIMENT RUNOS-INFORMATICA					
67	67	Analist, gradul IA	Informatica	S	1
68	68	Referent IA	Referent	M	1
69	69	Referent II	Referent	M	1

COMPARTIMENT JURIDIC

70	70	Consilier juridic gradul IA	Jurist	S	1
----	----	-----------------------------	--------	---	---

COMPARTIMENTUL FINANCIAR-CONTABILITATE

71	71	Economist specialist IA	Economist	S	1
72	72	Economist gradul I	Economist	S	1
73					

MAGAZIE

74	73	Magaziner	Magaziner	M	1
----	----	-----------	-----------	---	---

ACHIZITII PUBLICE, CONTRACTARE

75	74	Economist specialist IA	Achizitii publice Economist	S	1
----	----	-------------------------	--------------------------------	---	---

COMPARTIMENT ADMINISTRATIV

76	75	Economist gradul I	Economist	S	1
77	78	Portar	Portar	G	1
78	77	Sofer II	Sofer		1
79	78	Muncitor Calificat, III	Electrician		1
80	79	Muncitor Calificat, IV	Electromecanic		1
81	80	Muncitor Calificat, III	Fochist		1
82	81	Muncitor Calificat, III	Fochist		1
83	82	Muncitor Calificat, IV	Fochist		1
84	83	Muncitor Calificat, IV	Fochist		1
85	84	Muncitor Calificat, IV	Instalator		1

SPALATORIE

-Personal Sanitar Aux.

86	85	Spalatoreasa		G	1	OCUPAT TEMPORAR
87	86	Spalatoreasa		G	1	

BLOC ALIMENTAR SI DIETETICA

-Personal Sanitar Mediu

88	87	Asistent Medical Principal	Dietetica	PL	1
----	----	----------------------------	-----------	----	---

-Muncitori

89	88	Muncitor Calificat, III	Bucatar		1
90	89	Muncitor Calificat, III	Bucatar		1
91	90	Muncitor Calificat, III	Bucatar		1

TOTAL ACTIVITATE SPITAL

90,00

DISPENSAR TBC TOPOLOVENI

-Personal Sanitar Superior

92	91	Medic Primar	Pneumologie	S	1
----	----	--------------	-------------	---	---

-Personal Sanitar Mediu

93	92	Asistent Medical Principal	Generalist	S	1
94	93	Asistent Medical Principal	Igiena	PL	1
95	94	Asistent Medical Principal	Generalist	S	1

0	1	2	3	4	5
-Personal Sanitar Aux.					
96	95	Ingrijitoare	G	1	

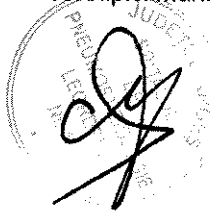
TOTAL DISPENSAR

5,00

TOTAL GENERAL

95,00

MANAGER,
ec.Clipici Marian



INTOCMIT,
Ing.Radu Sorinel-Ion

CENTRALIZATOR STAT DE FUNCȚII

CATEGORIA DE PERSONAL	NR. TOTAL POSTURI APROBATE	NR. POSTURI OCUPATE	NR. POSTURI VACANTE
CONDUCEREA (COMITETUL DIRECTOR)	3	3	0
ALTE FUNCȚII DE CONDUCERE	6	4	2
MEDICI	12	8	4
ALT PERSONAL SUPERIOR SANITAR	1	1	0
PERSONAL MEDIU SANITAR (asistenți medicali)	29	28	1
REGISTRATORI ȘI STATISTICIENI MEDICALI	2	2	0
ALT PERSONAL MEDIU SANITAR (maseur, gipsar)	0		0
PERSONAL AUXILIAR SANITAR	19	19	0
PERSONAL TESA	11	11	0
ALT PERSONAL DE DESERVIRE	12	12	0
TOTAL POSTURI	95	88	7

Nota:

Medici: 8 posturi ocupate din care unul este vacant rezervat

MANAGER,
 ec. Clăpăci Marian



INTOCMIT,
 Ing. Radu Sorinel Ion



Spitalul de Pneumoftiziologie Leordeni
Judetul Arges

CENTRALIZATOR CU PERSONALUL PE CATEGORII DE PERSONAL

1.ACTIVITATE SPITALICEASCA CU PATURI

TOTAL Personal din care:	Medici	Alt personal sanit.Superior	Personal Mediu Sanitar	Personal Auxiliar	T.E.S.A.	Muncitori
90	14	2	30	18	14	12

2.DISPENSAR TBC TOPOLOVENI

TOTAL Personal din care:	Medici	Alt personal sanit.Superior	Personal Mediu Sanitar	Personal Auxiliar	T.E.S.A.	Muncitori
5	1	0	3	1	0	0

3.TOTAL

95	15	2	33	19	14	12
----	----	---	----	----	----	----


MANAGER,
ec.Clipici Marian

INTOCMIT,
Ing.Radu Sorinel-Ion

